



User Manual

Geographic Names Arabicizer



MAPSTopno© Lite
(Arabicization)

Version 1.00

Coverage of this document

This document is the full text user manual for MAPSOno© Lite (Arabicizer) version 1.00.

Copyright and Illegal Usage Policy

Disclaimer of Liability

In preparation of this document, every effort has been made to offer the most current, correct, and clearly expressed information possible. Nevertheless, inadvertent errors in information may occur. In particular but without limiting anything here, Kalmasoft disclaims any responsibility for typographical errors and accuracy of the information that may be contained in this manual. The information and data included herein have been compiled by our staff from a variety of sources, and are subject to change without notice to you. Kalmasoft makes no warranties or representations whatsoever regarding the quality, content, completeness, suitability, adequacy, sequence, accuracy, or timeliness of such information and data. In any situation where the official sent documents of Kalmasoft differ from the text contained in this manual, the official documents take precedence. The information and data made available in this document are provided "as is" without warranties of any kind.

Disclaimer of reliability

Kalmasoft makes no representations or warranties regarding the condition or functionality of this software, its suitability for use, or that this will be uninterrupted or error-free.

Disclaimer of damages

By using Kalmasoft MAPSOno© Lite (Arabicizer), you assume all risks associated with the use of this software, including any risk to your computer, software or data being damaged by any virus, software, or any other file which might be transmitted or activated via this software. We shall not in any event be liable for any direct, indirect, punitive, special, incidental, or consequential damages, including, without limitation, lost revenues, or lost profits, arising out of or in any way connected with the use or misuse of the software or lack of information in this manual.

Disclaimer of endorsement

Kalmasoft does not favor one group over another, and any references herein to any country, organizations, specific commercial products, process, or service by trade name, trademark, manufacturer, or otherwise, do not necessarily constitute or imply its endorsement or recommendation by us.

Copyright information

The graphics and contents on this manual are the copyrighted work of Kalmasoft and contain proprietary trademarks and trade names of the Kalmasoft. No part of this document can be copied without a prior written consent from Kalmasoft.

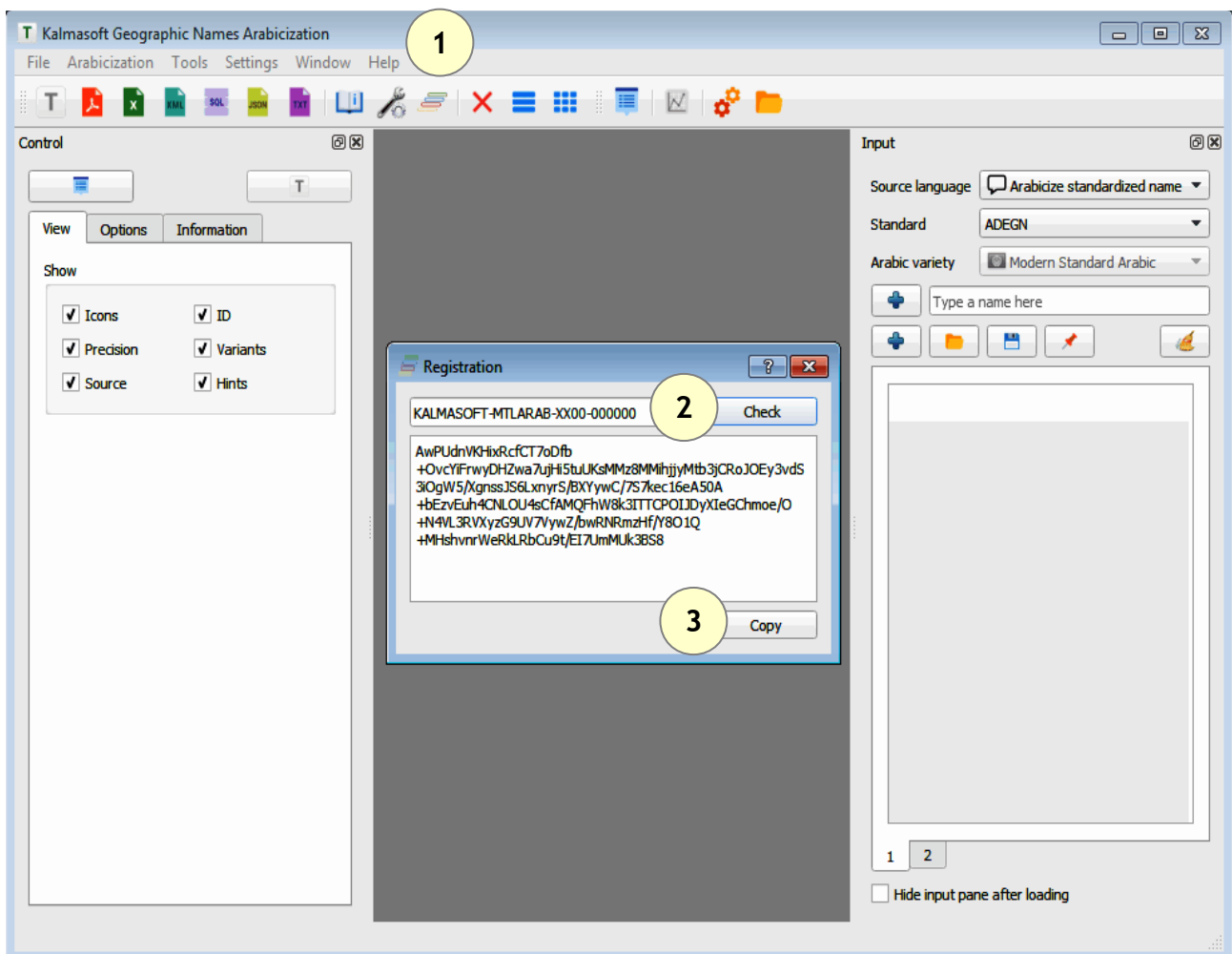
Table of Contents

Coverage of this document.....	2
Copyright information.....	2
Licensing the software.....	4
Working with samples.....	5
Setting the samples database.....	6
Showing the samples ribbon.....	7
Working with user input.....	10
Arabicizing a single name from the input pane.....	10
Saving a single name.....	11
Deleting a single name.....	11
Arabicizing a list of names.....	12
Adjusting system output.....	14
Adjusting Arabicization.....	14
System settings.....	16
Setting language transcription.....	16
Exporting the Arabicization results.....	17
Working with files.....	18
Saving name list to file.....	18
Loading files.....	19

Licensing the software


- Download Kalmasoft Library rar archive and install it. You do not need this if you have installed any of Kalmasoft's applications before.
- Download the software rar archive and install in the same folder.

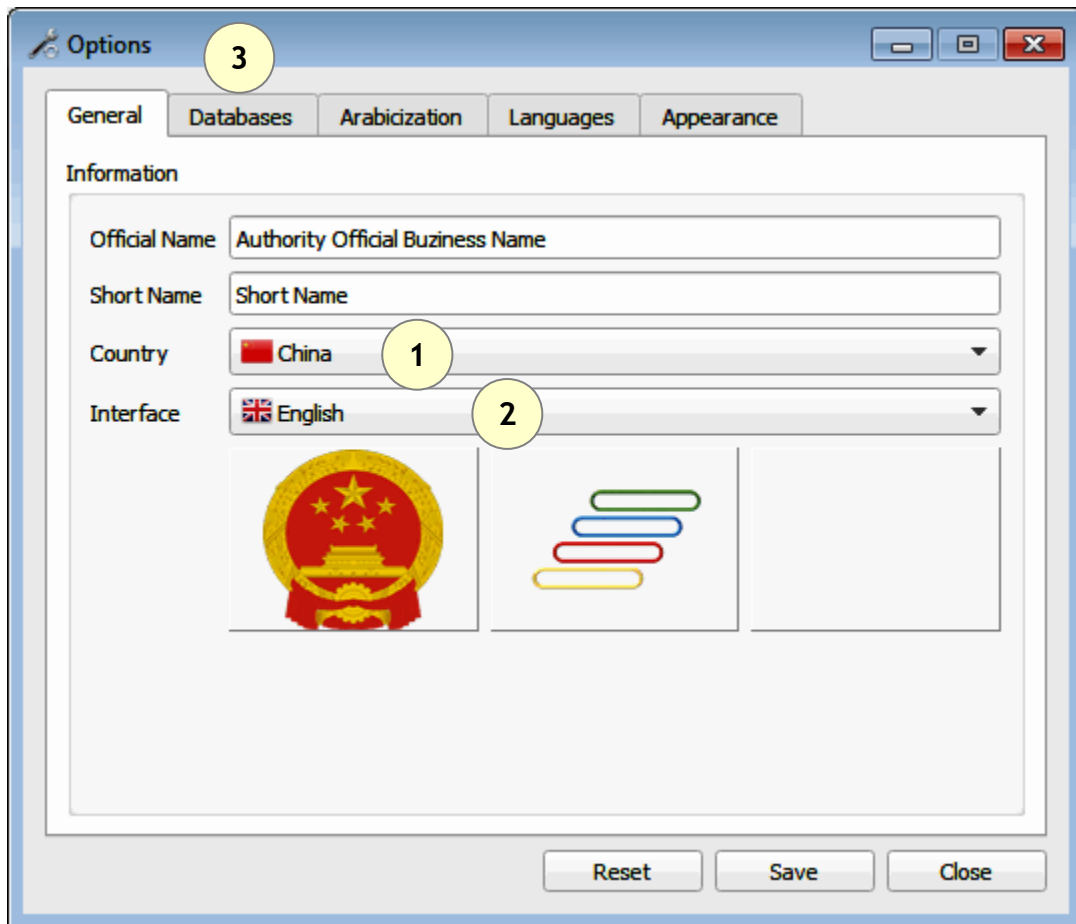
The evaluation copy needs to be registered to use all features.



- Enter the registration key (KALMASOFT-MTLAR-XX00-000000)
- Click (Check) and send the generated key to Kalmasoft to get your registered copy.

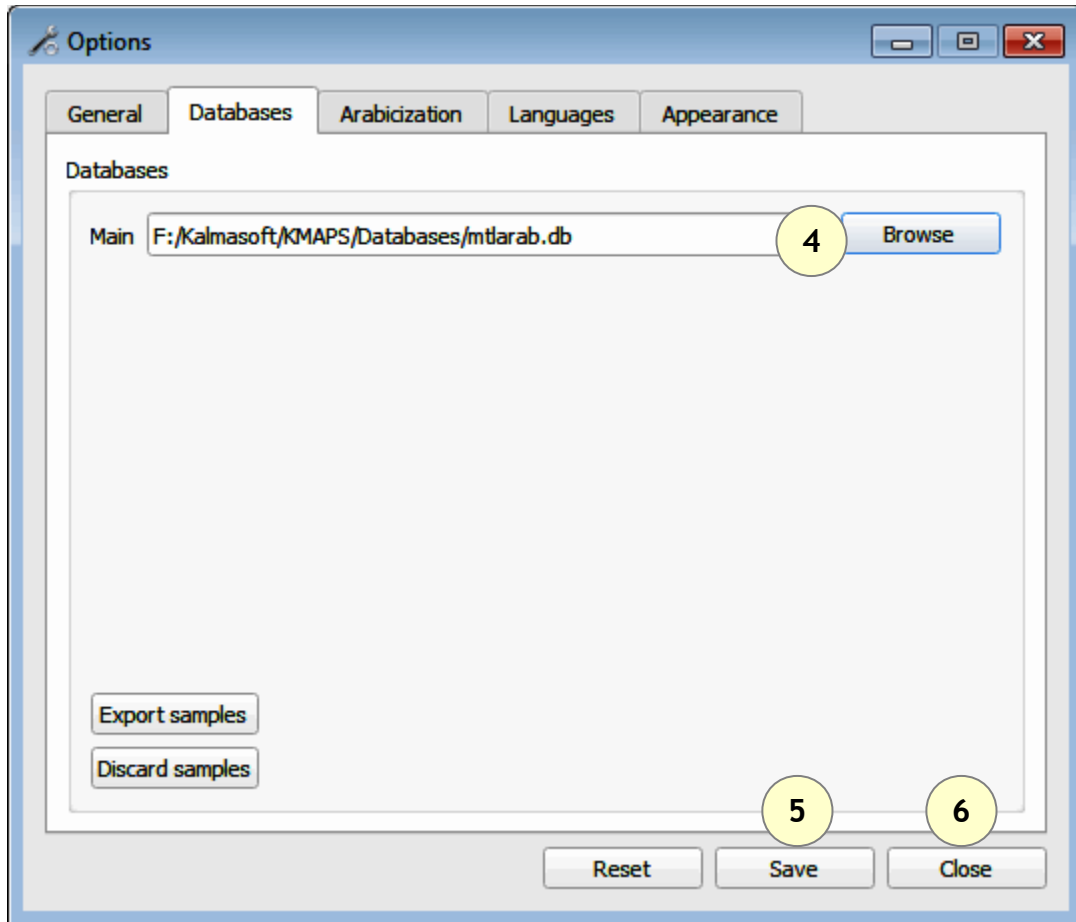
Working with samples

- The system is ready by default for input but, you may need to work with samples.
- Click on the Options button () on the menu bar.



- Set country and language according to your preferences.
- Open the Databases tab (3).

Setting the samples database




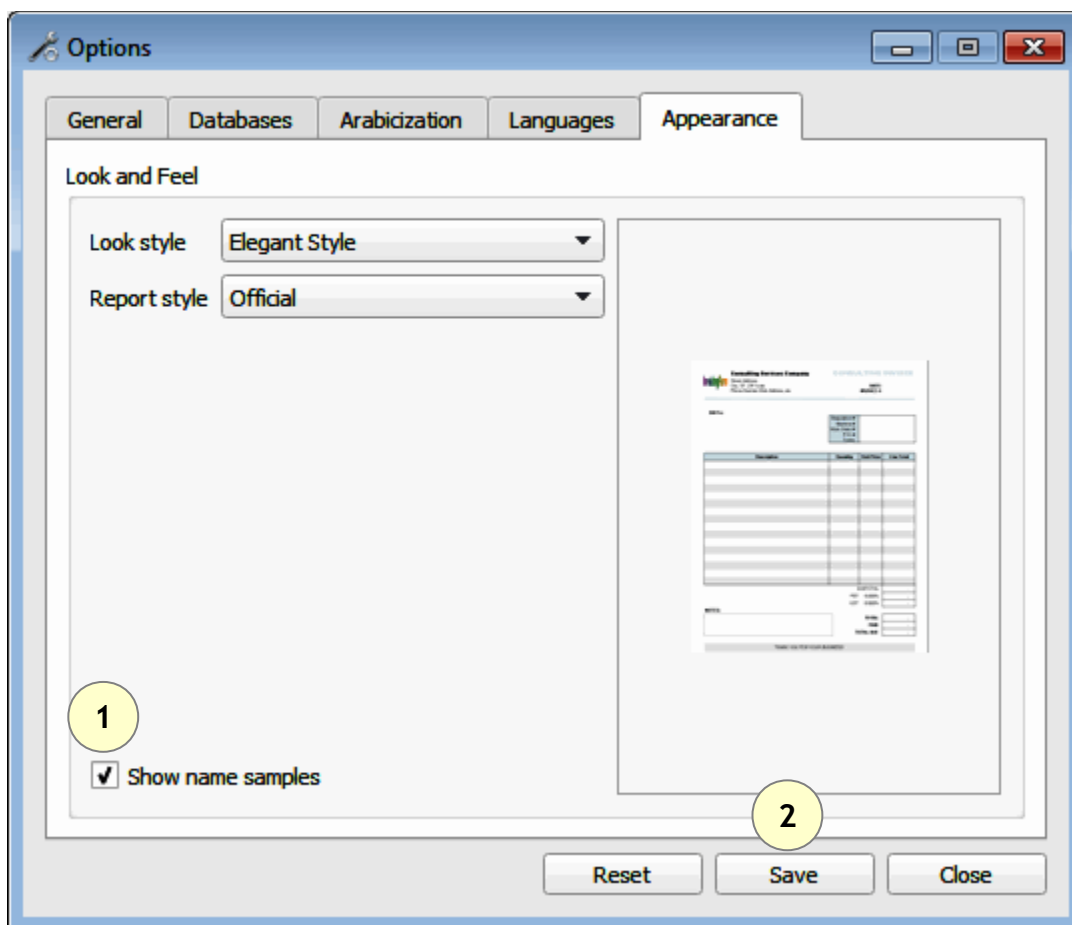
Set database to **C:/Program Files/Kalmasoft/KMAPS/Databases/mtlarab.db**

Depending on your installation folder, the above path may differ slightly but the part (**Kalmasoft/KMAPS/Databases/mtlarab.db**) should always remain valid.

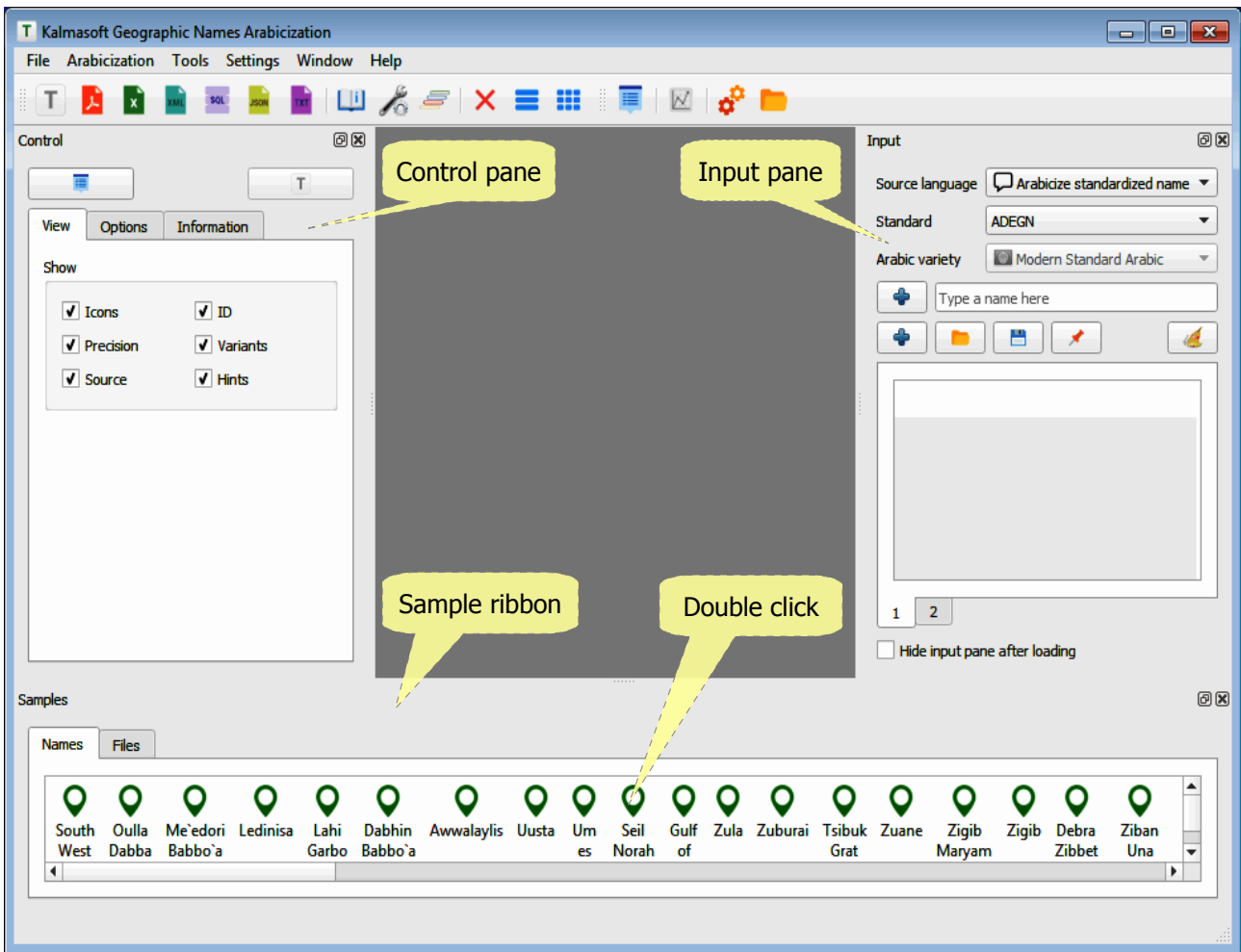
You must restart the program for the setting to become effective.

Showing the samples ribbon

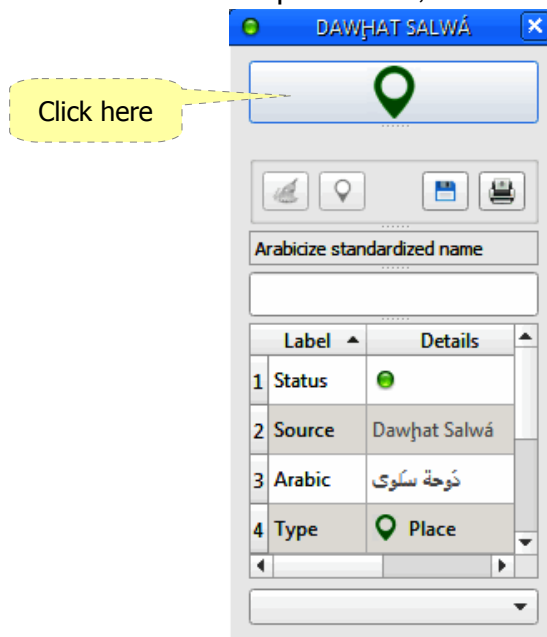
- Click on the Options button () on the menu bar.
- Switch to Appearance tab, check the box (Show name samples)
- Click (Save)



The samples ribbon should appear immediately.



Double click any name from the sample ribbon, a name card will appear.



The results should appear as a simple table or advanced view.

The screenshot shows the 'Arabization' software interface. On the left, there is a control panel with 'Variants' (Expand all), 'Reference' (Export database), and a list of Arabic characters (ش س ز ر ذ د خ ح ج ث ت ب ا ء). Below this is a search filter with a 'contains' dropdown, a 'Clear' button, and a 'Case sensitive' checkbox. A progress bar shows 0% completion, and it indicates 170 names. At the bottom left are icons for file operations. The main area is a table with the following columns: ID, Source, Arabic, Type, and Language. A yellow callout bubble points to the 'Arabic' column of the row for ID 00044, with the text 'Double click any cell for details'.

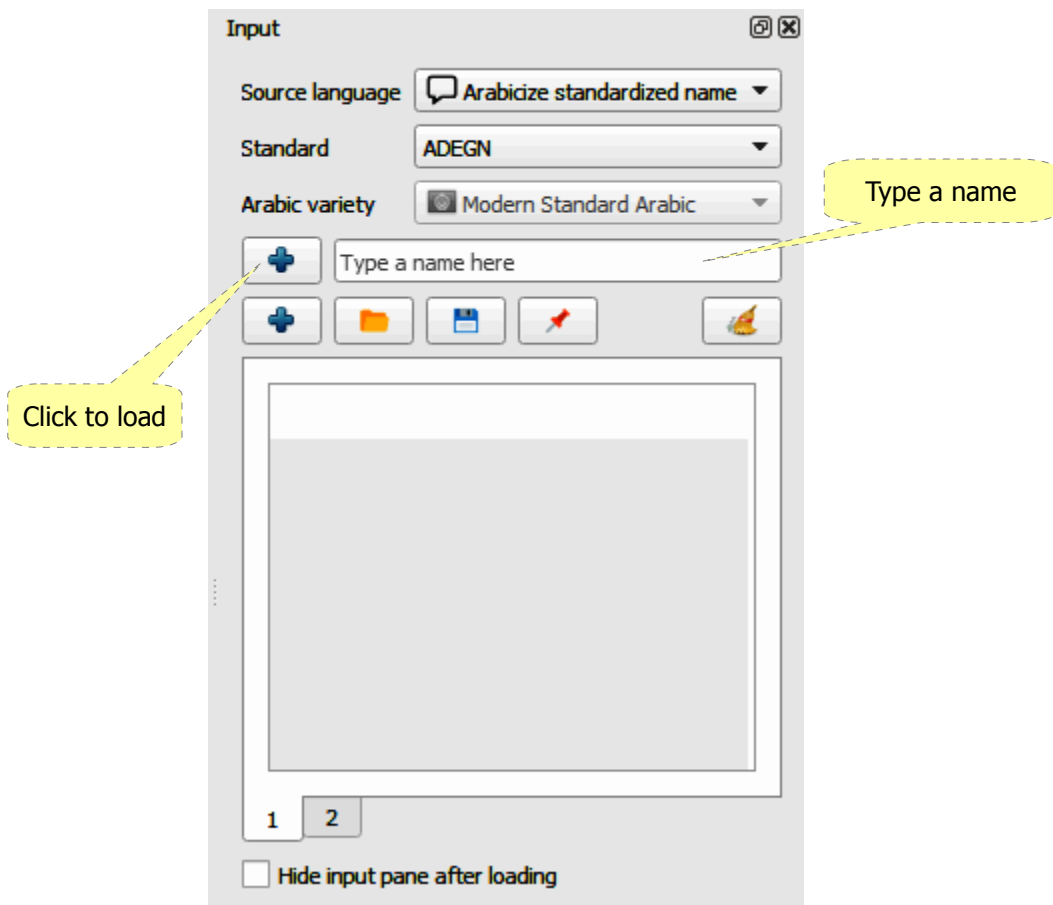
ID	Source	Arabic	Type	Language
00019	'Unaybah	نَيْبَةَ	Place	BGN
00020	Umm Zabā'ir	أُمُّ زَبَائِرَ	Place	BGN
00021	Umm Tall	أُمُّ تَلِّ	Place	BGN
00022	Umm Shujayrah ash S...	أُمُّ شُجَيْرَةَ الشَّرْقِيَّةِ	Place	BGN
00023	Umm Shujayrah al Gh...	أُمُّ شُجَيْرَةَ الْغَرْبِيَّةِ	Place	BGN
00024	Umm Şawwānah	أُمُّ صَوَّانَةَ	Place	BGN
00025	Umm Şawwānah	أُمُّ صَوَّانَةَ	Place	BGN
00026	Umm Rummānah	أُمُّ رُمَّانَةَ	Place	BGN
00027	Umm Rummānah	أُمُّ رُمَّانَةَ	Place	BGN
00028	Umm Quşayr	أُمُّ قُصَيْرَ	Place	BGN
00029	Umm Qays	أُمُّ قَيْسَ	Place	BGN
00030	Umm Qanţarah ash S...	أُمُّ قَنْطَرَةَ الشَّرْقِيَّةِ	Place	BGN
00031	Umm Qanţarah al Gh...	أُمُّ قَنْطَرَةَ الْغَرْبِيَّةِ	Place	BGN
00032	Umm Nuwwārah	أُمُّ نُوَّارَةَ	Place	BGN
00033	Umm Kharrūbah	أُمُّ خَرُوبَةَ	Place	BGN
00034	Umm Juraysāt	أُمُّ جُرَيْسَاتَ	Place	BGN
00035	Umm Jawzah	أُمُّ جَوَّزَةَ	Place	BGN
00036	Umm Ḥamāṭ	أُمُّ حَمَّاطَ	Place	BGN
00037	Umm Buţaymah	أُمُّ بَطَيْمَةَ	Place	BGN
00038	Umm as Surab	أُمُّ السَّرْبَ	Place	BGN
00039	Umm as Summāq	أُمُّ السَّمَّاقَ	Place	BGN
00040	Umm an Na'ām al Gh...	أُمُّ النَّأَمِ الْغَرْبِيَّةِ	Place	BGN
00041	Umm al Walīd	أُمُّ الْوَلِيدَ	Place	BGN
00042	Umm al Usūd	أُمُّ الْوَسُودَ	Place	BGN
00043	Umm al Qanāfidh	أُمُّ الْقَنَافِذَ	Place	BGN
00044	Umm al Manābī'	أُمُّ الْمَنَابِجِ	Place	BGN
00045	Umm al Lūlū	أُمُّ الْوَلُولُ	Place	BGN
00046	Umm al Kundum	أُمُّ الْكُنْدُمَ	Place	BGN
00047	Umm al Khirwa'	أُمُّ الْخِرْوِ	Place	BGN
00048	Umm al Khanāzīr	أُمُّ الْخَنَازِيرَ	Place	BGN

Double click any cell for details


Working with user input

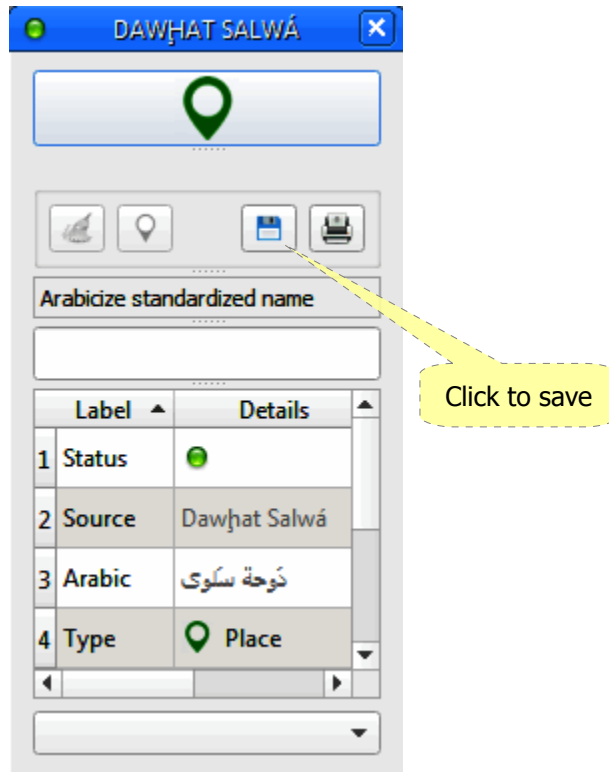
Arabicizing a single name from the input pane

- Type a name in the input line.
- A name card will appear.
- Click the card top button to Arabicize.



Saving a single name

- Sample names are saved in the local database.
- names are saved for reference only and not meant to be too many.
- A name can be saved only after Arabicization by clicking the button ().
- Saved name appears immediately in the sample ribbon.

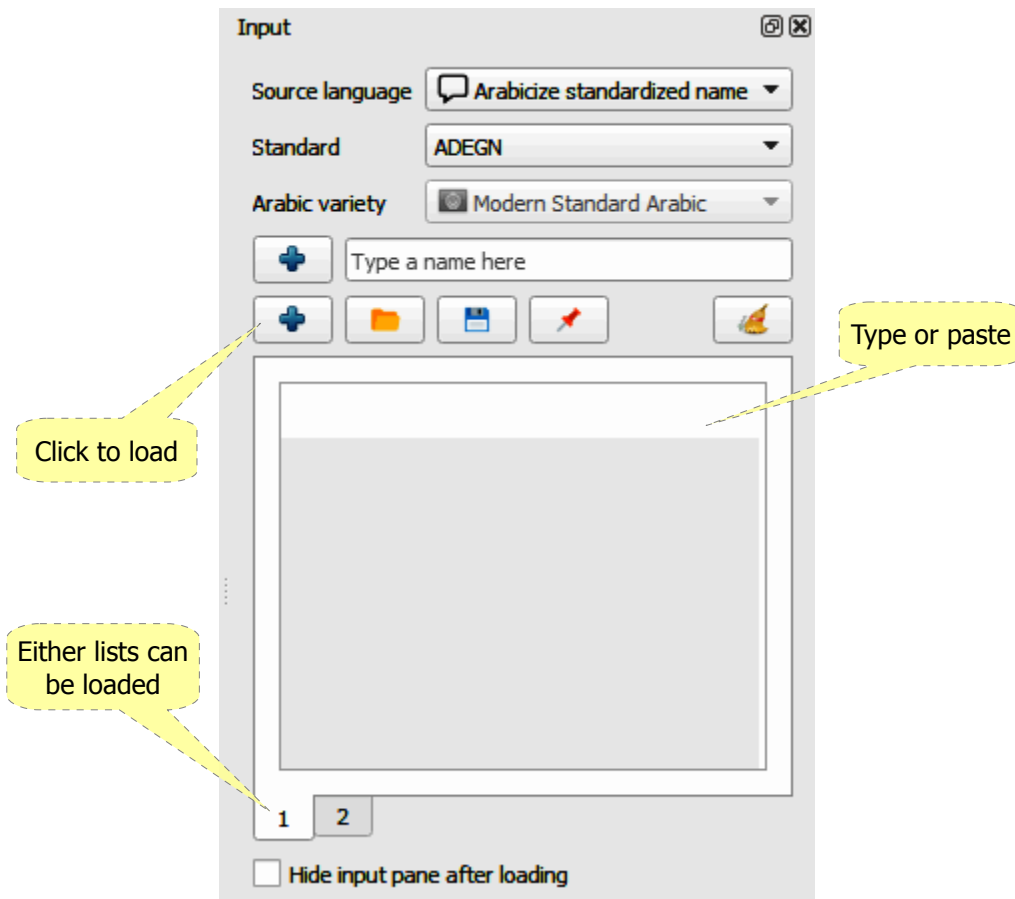


Deleting a single name

- Select the name from the sample ribbon.
- Press the (Delete) key from the keyboard.

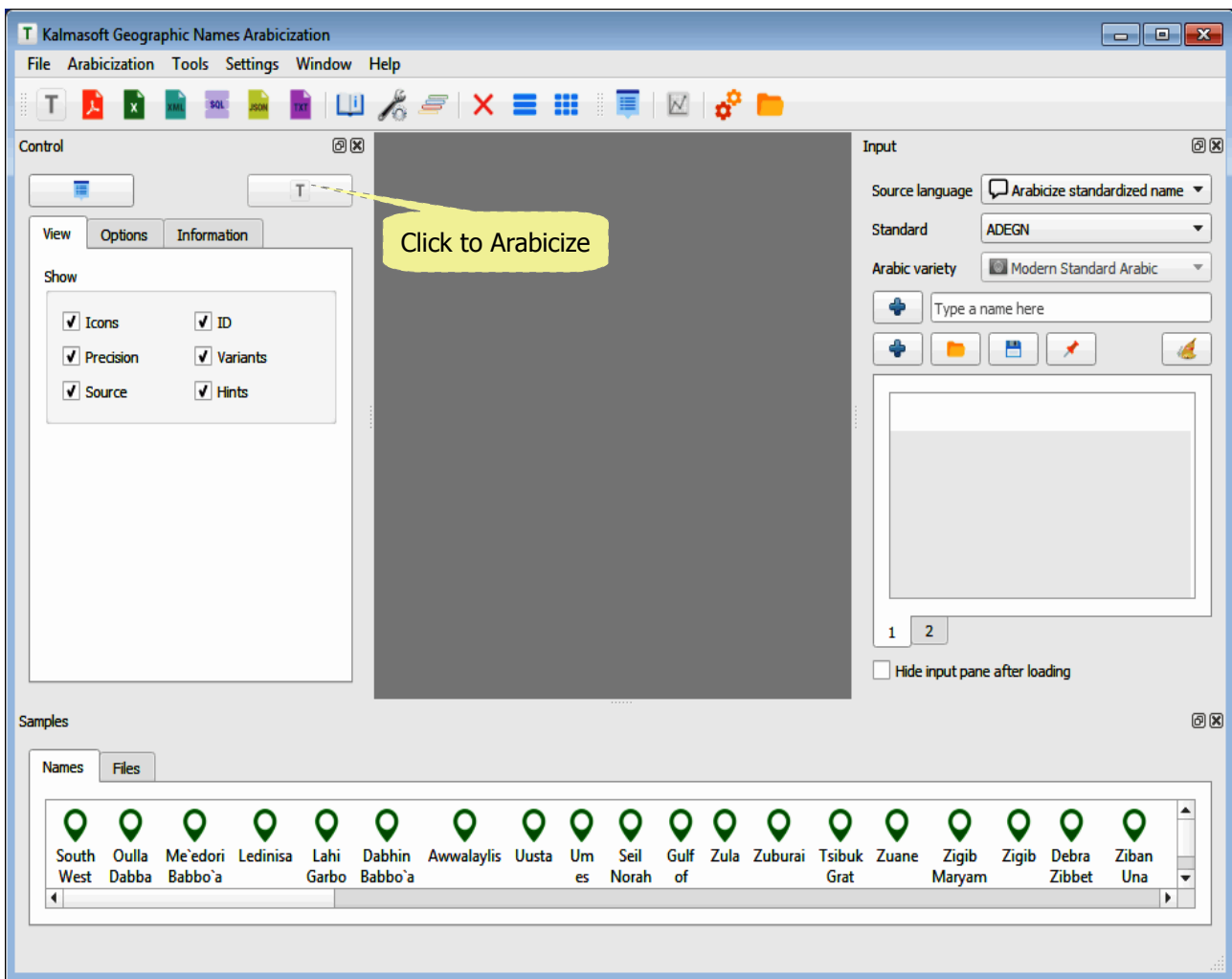
Arabicizing a list of names


- Type or paste a list of names in the input area.
- Click the button (+) to load the names.



Names can be separated from each other in several ways:


- Each name is in a separate line, the delimiter in this case is (\n) mark i.e. the new line; this is the default delimiter.
- Adding any of the following characters (- , _ ; / \ space) or tab, in this case you must specify the type of the delimiter from the setting interface.

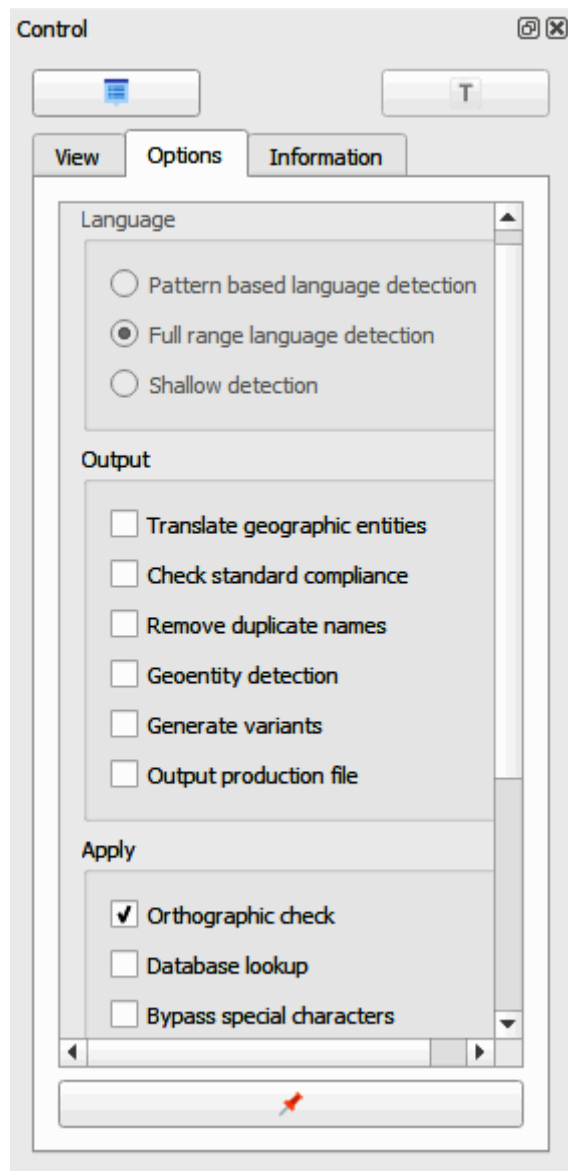


- Click the button () in the control pane to start Arabization.
- You may select the view type as you want from the same pane.

Adjusting system output

Adjusting Arabicization

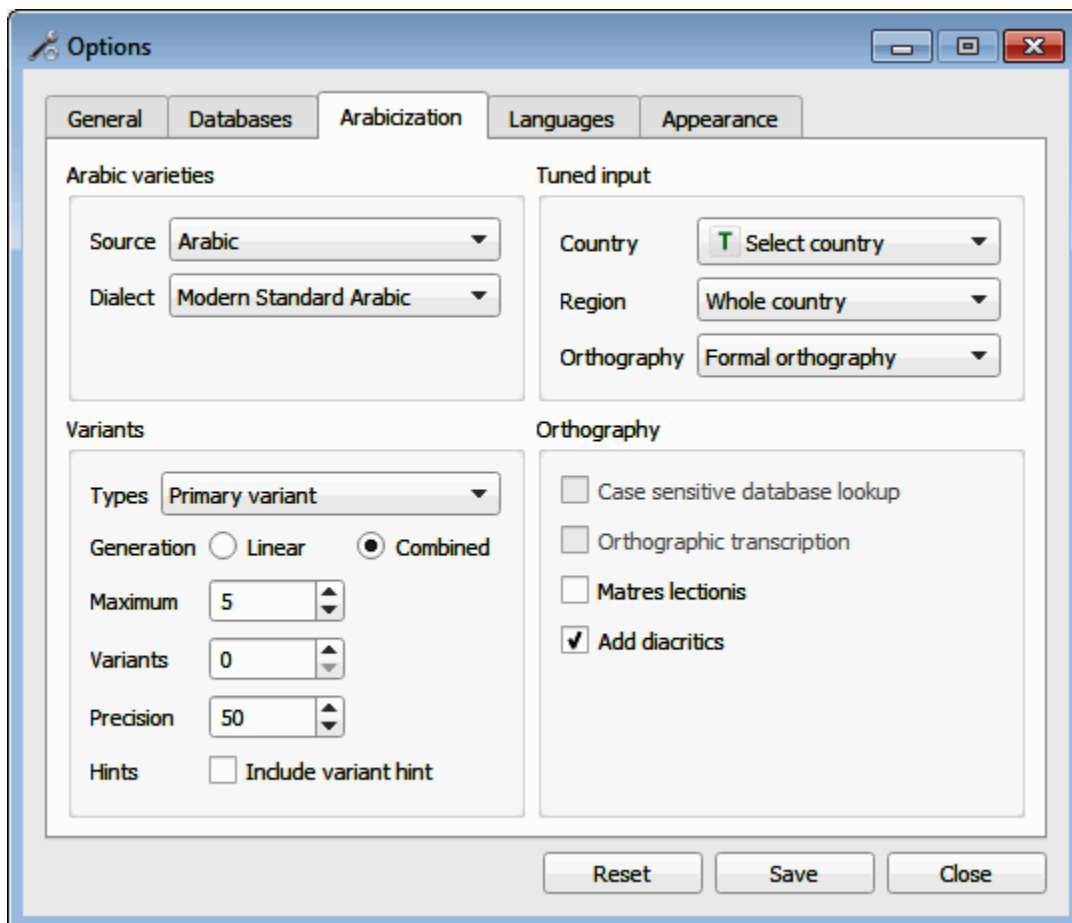
- Click the (Options) tab in the Control pane.
- Set as required, you may enter an ID prefix to be shown along with the serial IDs.
- You may save your settings as default by clicking the button () in the center.



System settings

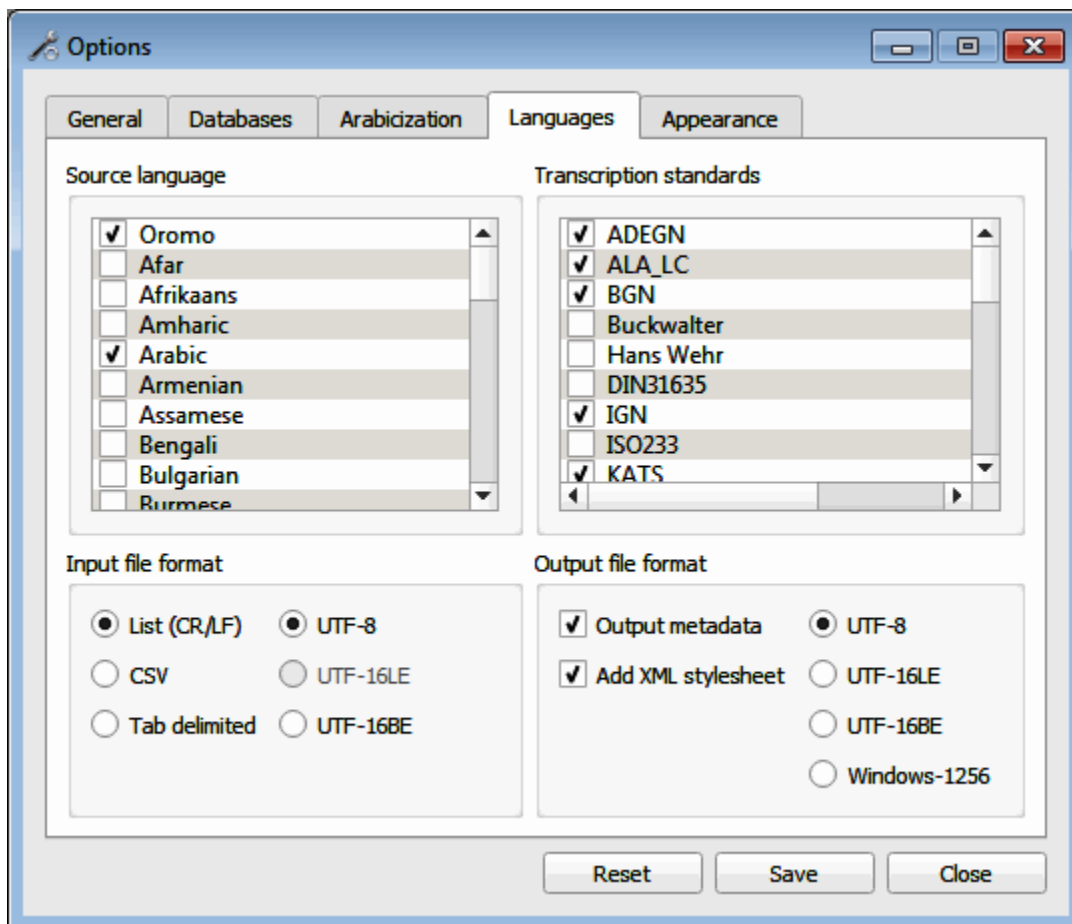
Setting language transcription

- Open the Options screen, click on the Arabicization tab.
- Select the language varieties as required.
- Click Save.



Exporting the Arabicization results

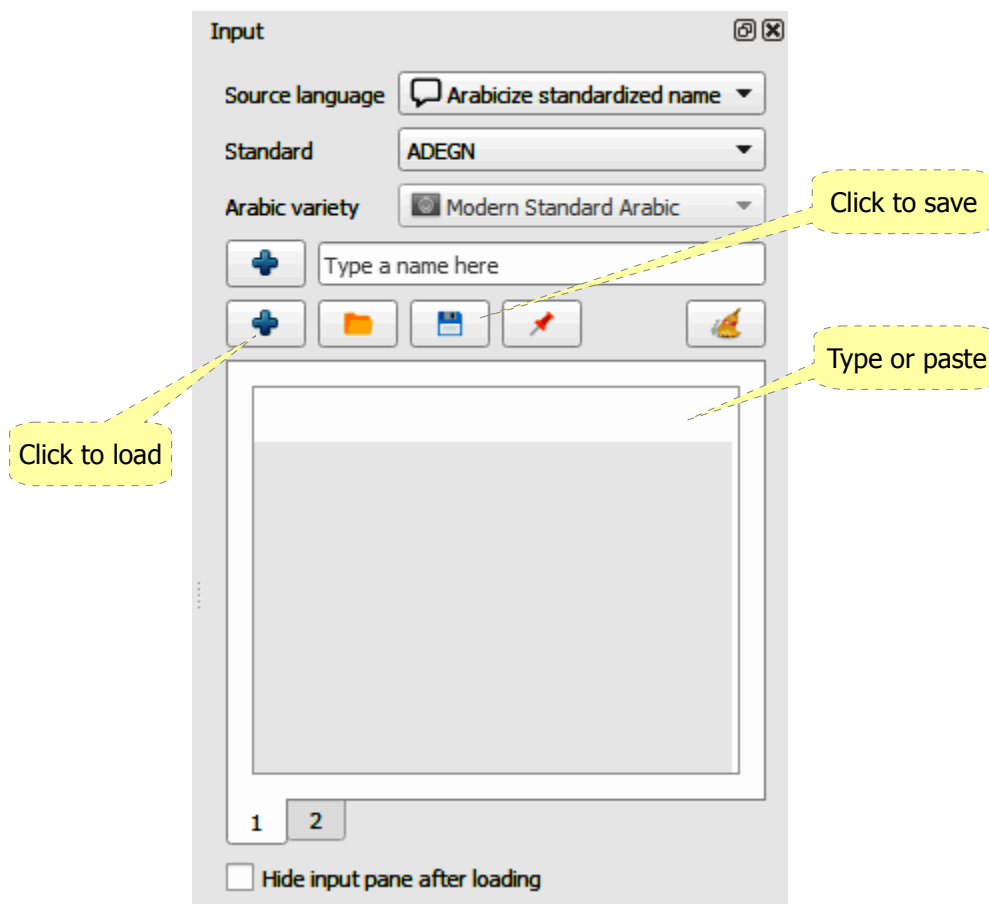
- Set both file format and encoding as needed.
- By default, exporting to XML will also generate a style sheet file for nicely laid-out contents on the browser, uncheck option (Add XML stylesheet) if you don't need it, the same applies to Metadata option.



Working with files

Saving name list to file

- Paste a list of name or names to the space shown below.
- Click on button (+) to load the list of names.
- Once loaded click the button (📁) to save the list to file.
- The file name will appear in the sample ribbon, under the “Files” tab.
- Double click the file name to load all names saved.



Loading files

- Click on button (📁) to browse for the file.
- Double click the file name to open, the file name will be imported to the ribbon.
- Double click the file name in the ribbon to load the names saved.