



# **User Manual**

**Arabic Verb Conjugator**  
***Full-form Conjugation Generator***



**MAPS Ortho© Lite**  
**(Conjugation)**

Version 2.00

## Coverage of this document

This document is the full text user manual for MAPSOrtho© Lite (Conjugator) version 2.00.

### **Copyright and Illegal Usage Policy -**

#### **Disclaimer of Liability**

In preparation of this document, every effort has been made to offer the most current, correct, and clearly expressed information possible. Nevertheless, inadvertent errors in information may occur. In particular but without limiting anything here, Kalmasoft disclaims any responsibility for typographical errors and accuracy of the information that may be contained in this manual. The information and data included herein have been compiled by our staff from a variety of sources, and are subject to change without notice to you. Kalmasoft makes no warranties or representations whatsoever regarding the quality, content, completeness, suitability, adequacy, sequence, accuracy, or timeliness of such information and data. In any situation where the official sent documents of Kalmasoft differ from the text contained in this manual, the official documents take precedence. The information and data made available in this document are provided "as is" without warranties of any kind.

#### **Disclaimer of reliability**

Kalmasoft makes no representations or warranties regarding the condition or functionality of this software, its suitability for use, or that this will be uninterrupted or error-free.

#### **Disclaimer of damages**

By using Kalmasoft MAPSOrtho© Lite (Conjugator), you assume all risks associated with the use of this software, including any risk to your computer, software or data being damaged by any virus, software, or any other file which might be transmitted or activated via this software. We shall not in any event be liable for any direct, indirect, punitive, special, incidental, or consequential damages, including, without limitation, lost revenues, or lost profits, arising out of or in any way connected with the use or misuse of the software or lack of information in this manual.

#### **Disclaimer of endorsement**

Kalmasoft does not favor one group over another, and any references herein to any country, organizations, specific commercial products, process, or service by trade name, trademark, manufacturer, or otherwise, do not necessarily constitute or imply its endorsement or recommendation by us.

#### **Copyright information**

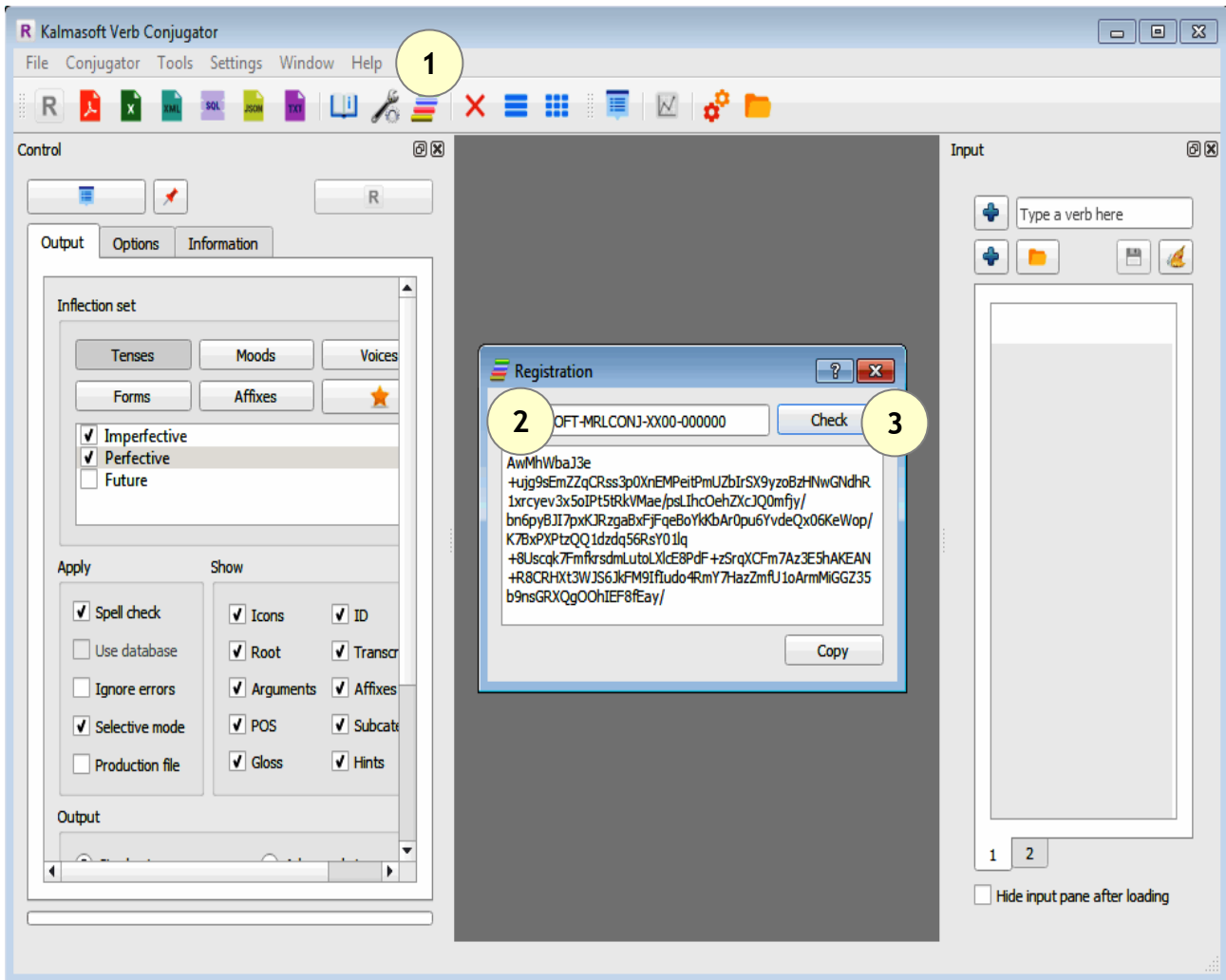
The graphics and contents on this manual are the copyrighted work of Kalmasoft and contain proprietary trademarks and trade names of the Kalmasoft. No part of this document can be copied without a prior written consent from Kalmasoft.

## Table of Contents

Coverage of this document.....	2
Copyright information.....	2
Licensing the software.....	4
Working with samples.....	5
Setting the samples database.....	6
Showing the samples ribbon.....	7
Working with user input.....	10
Conjugating a single verb from the input pane.....	10
Saving a single verb.....	11
Applying custom setting.....	11
Deleting a single verb.....	11
Conjugating a list of verbs.....	12
Adjusting system output.....	14
Adjusting verb grammatical subclasses.....	14
Adjusting conjugation arguments.....	15
System settings.....	16
Setting language transcription.....	16
Exporting the conjugation results.....	17
Working with files.....	18
Saving verb list to file.....	18
Loading files.....	18
Visualization.....	19


## Licensing the software

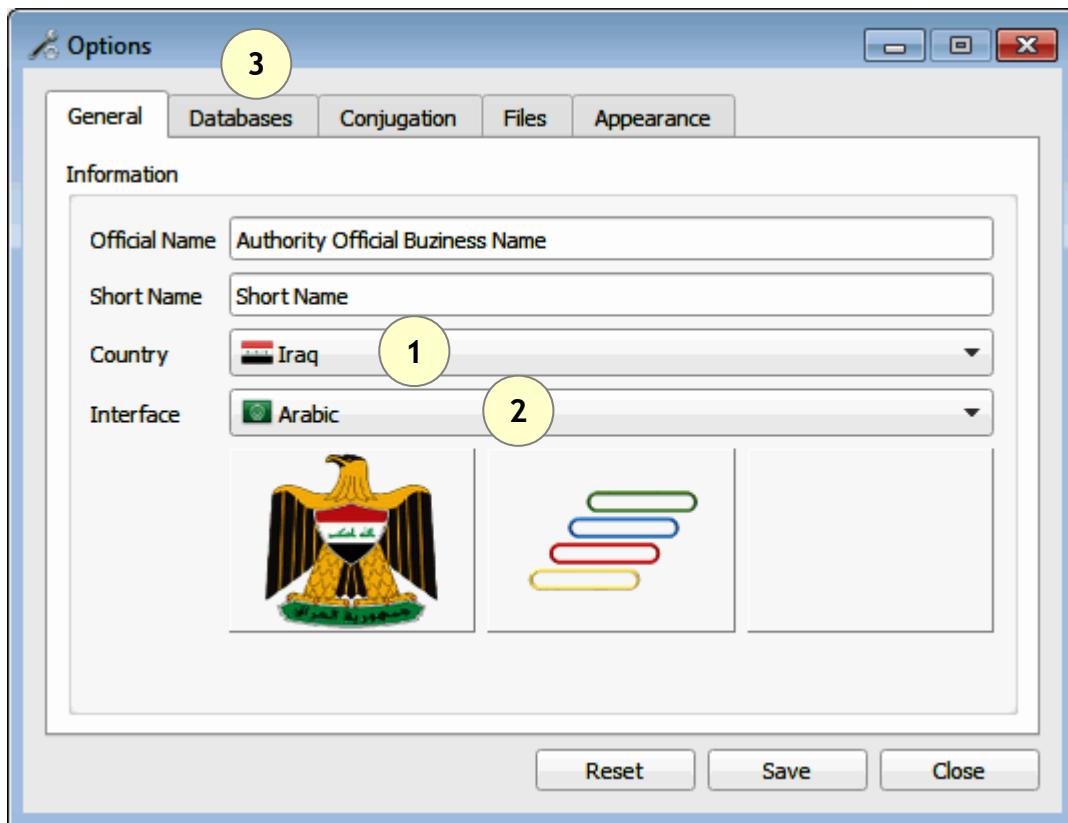
1. Download Kalmasoft Library rar archive and install it, you do not need this if you have installed any of Kalmasoft's applications before.
2. Download the software rar archive and install in the same folder.



3. Enter the registration key (KALMASOFT-MRLCONJ-XX00-000000)
4. Click (Check) and send the generated key to Kalmasoft to get your registered copy.

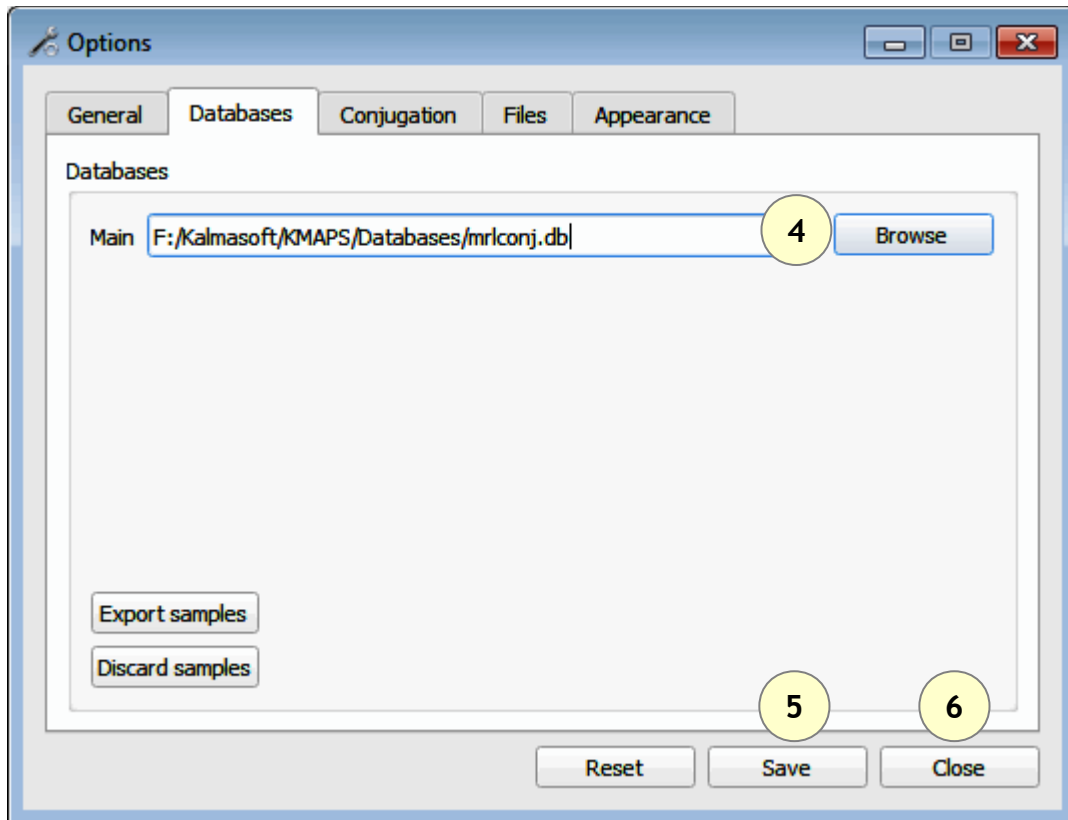
## Working with samples

- The system is ready by default for input but, you may need to work with samples.
- Click on the Options button (  ) on the menu bar.



- Set country and language according to your preferences.
- Open the Databases tab (3).

## Setting the samples database




Set database to **C:/Program Files/Kalmasoft/KMAPS/Databases/mrlconj.db**

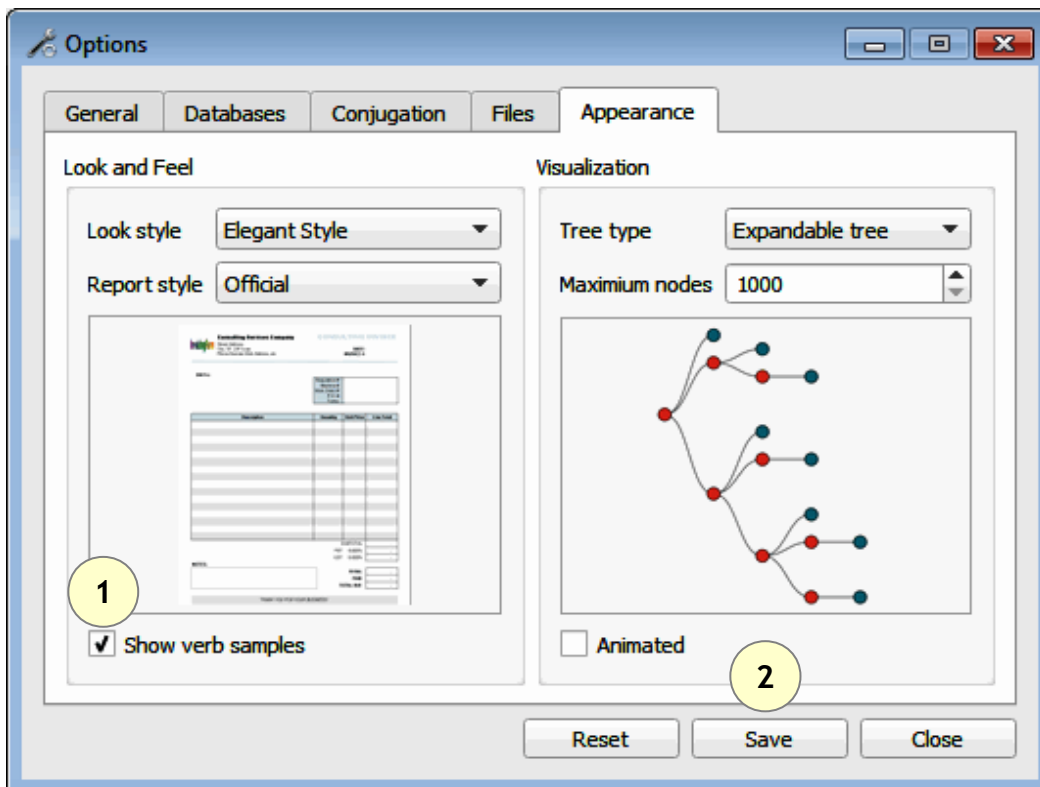
Depending on your installation folder, the above path may differ slightly but the part (**Kalmasoft/KMAPS/Databases/mrlconj.db**) should always remain valid.

- click (4) to Browse, set the database as highlighted above
- save (5)
- and close (6)

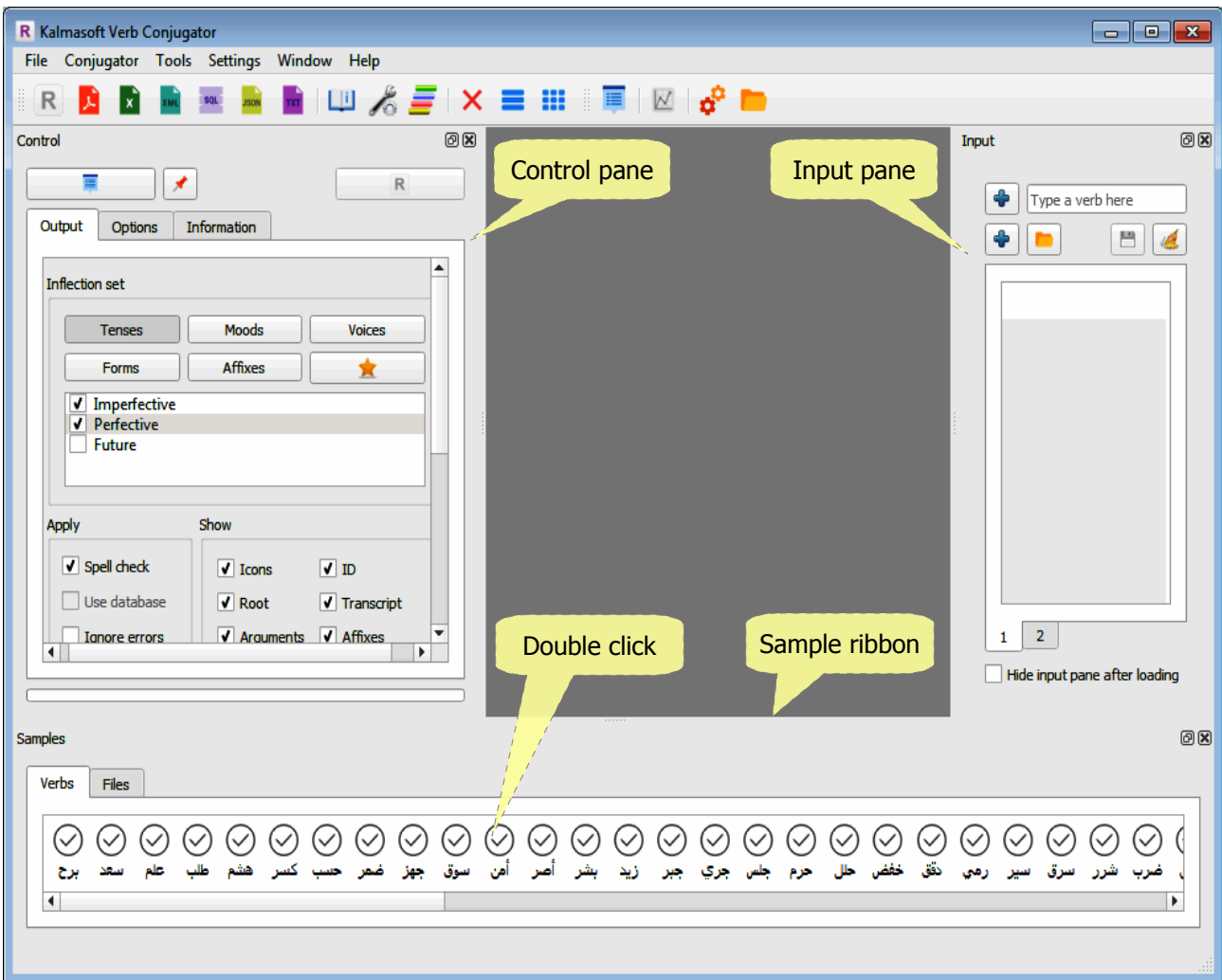
You must restart the program for the setting to be effective.

## Showing the samples ribbon

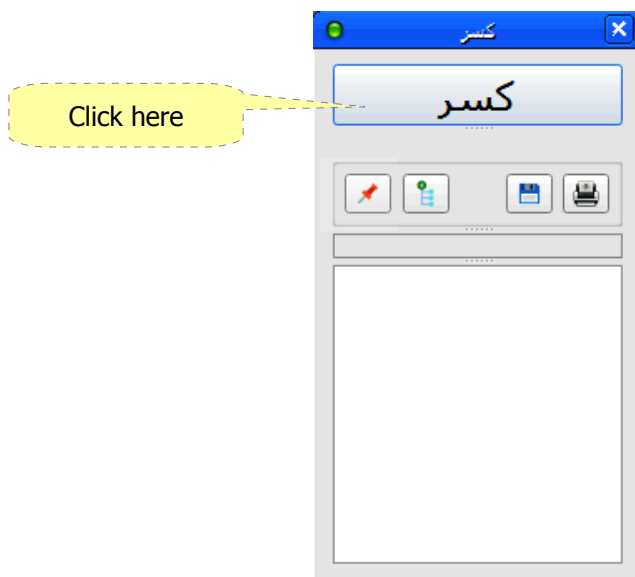
- Click on the Options button (  ) on the menu bar.
- Switch to Appearance tab, check the box (Show verb samples)
- Click (Save)



The samples ribbon should appear immediately.



Double click any verb from the sample ribbon, a verb card will appear.



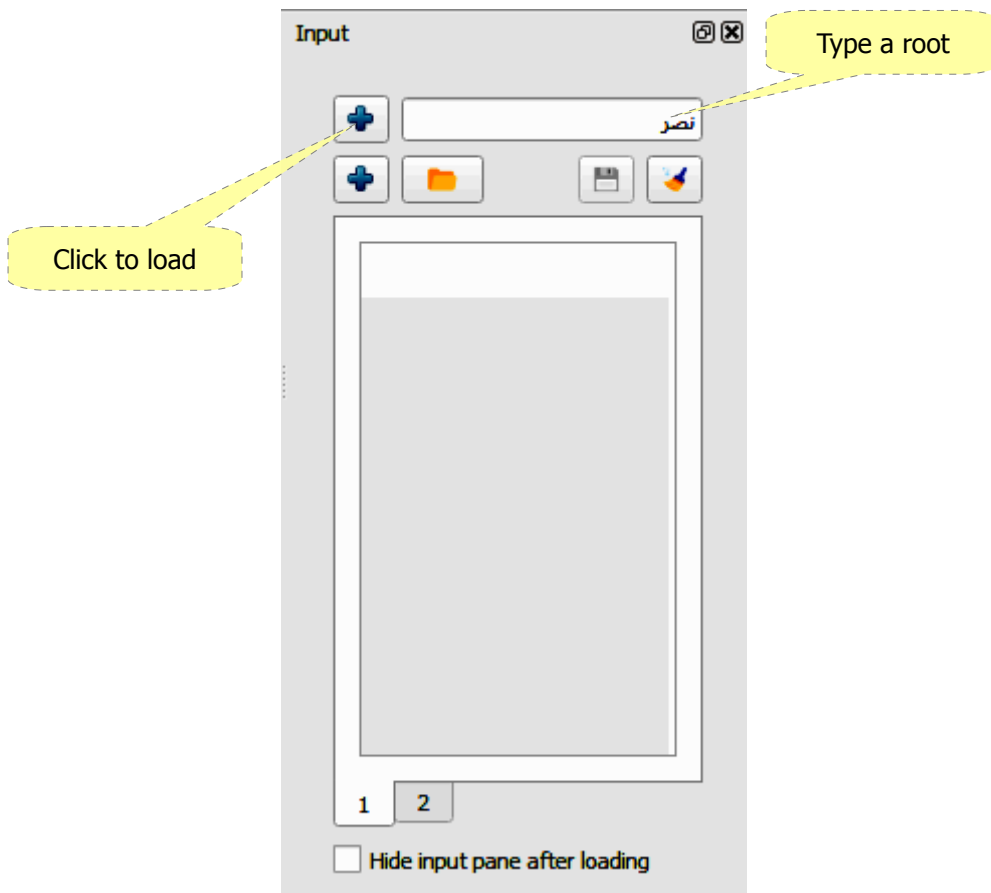





## Working with user input

### *Conjugating a single verb from the input pane*

- Type an Arabic root in the input line.
- A verb card will appear.
- Click the card button to conjugate.




## ***Saving a single verb***

- Sample verbs are saved in the local database.
- Verbs are saved for reference only and not meant to be too many.
- A verb can be saved only after conjugation by clicking the button (  ).
- Saved verb appears immediately in the sample ribbon.



## ***Applying custom setting***

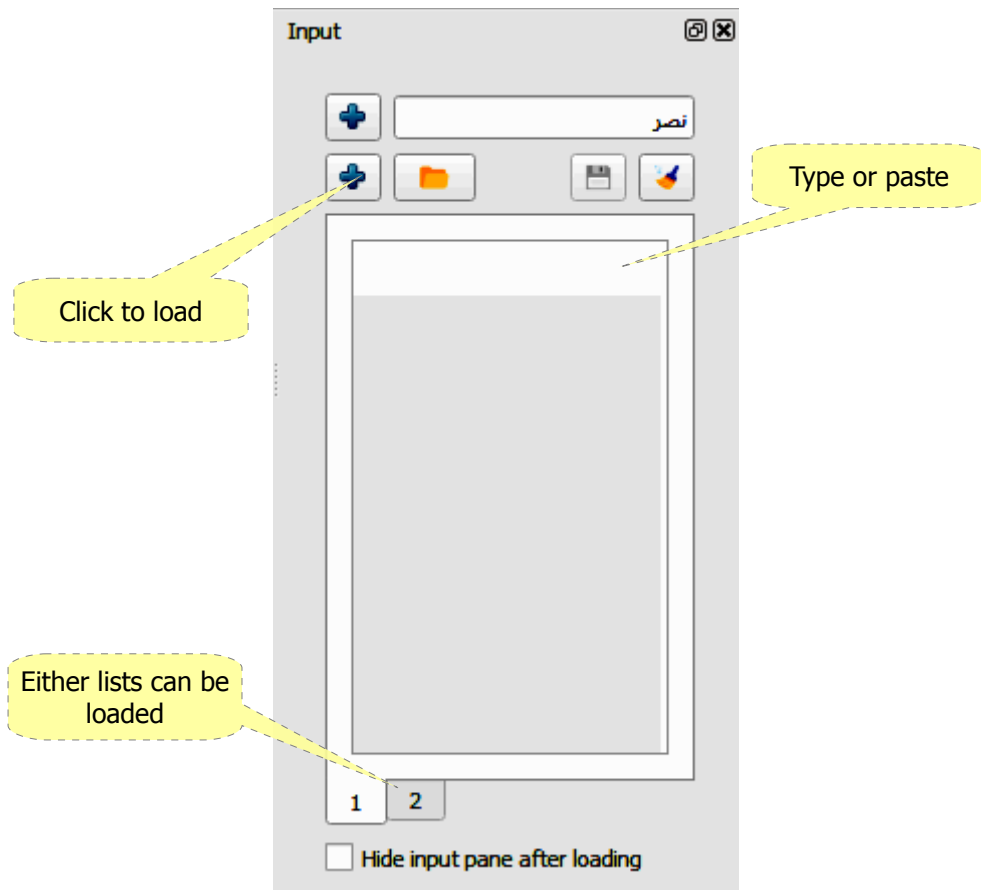
Custom settings are saved along with each single verb, click on the (  ) button to reassign the same saved settings.

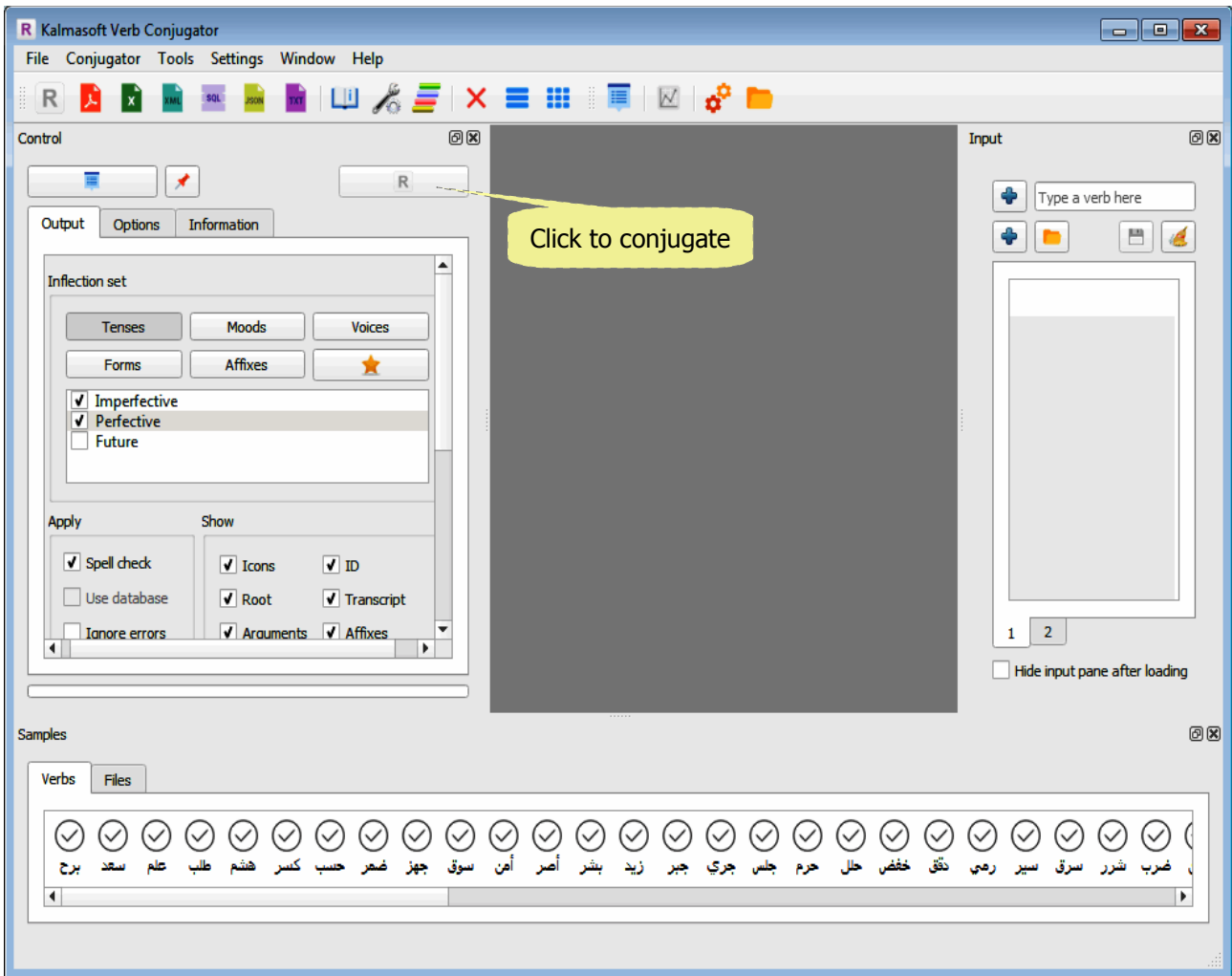
## ***Deleting a single verb***

- Select the verb from the sample ribbon.
- Press the (Delete) key from the keyboard.

## Conjugating a list of verbs

- Type a list of Arabic roots in the input area.
- Click the button (+) to load the roots.



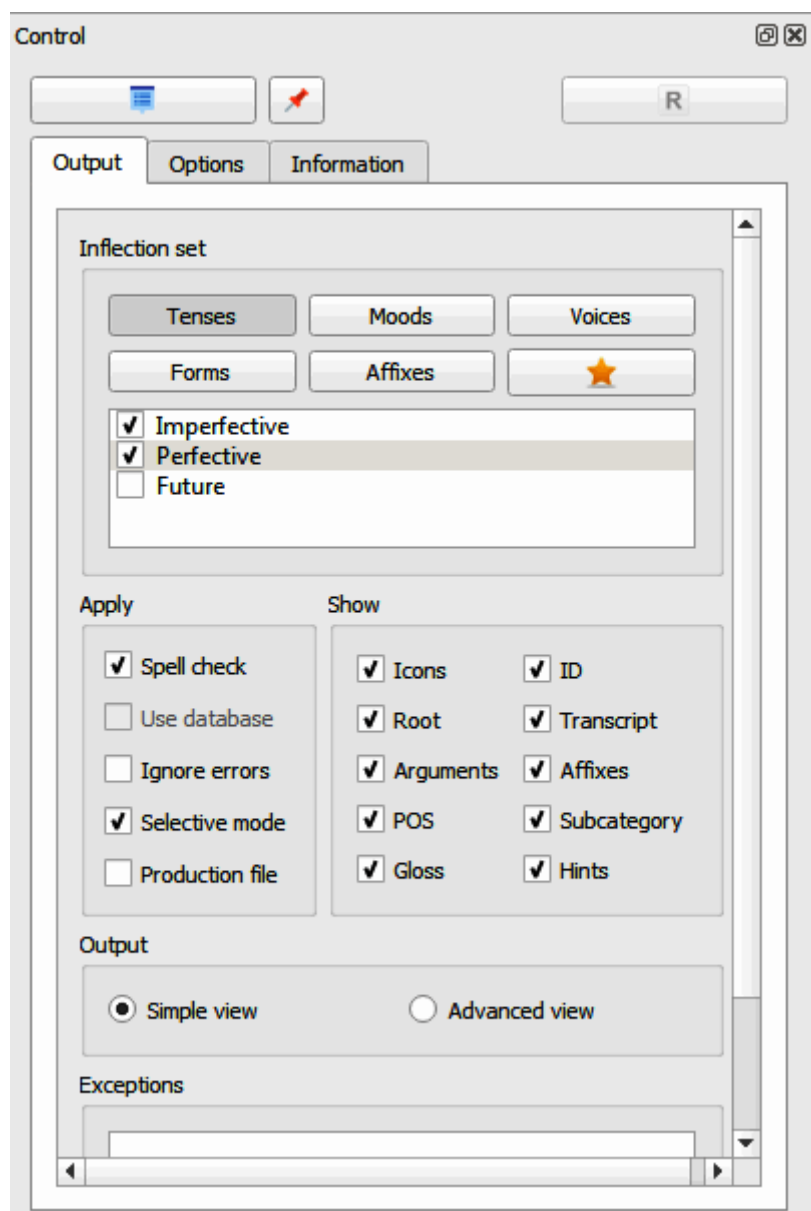


- Click the button ( **R** ) in the control pane to start conjugation.
- You may select the view type as you want from the same pane.

## Adjusting system output

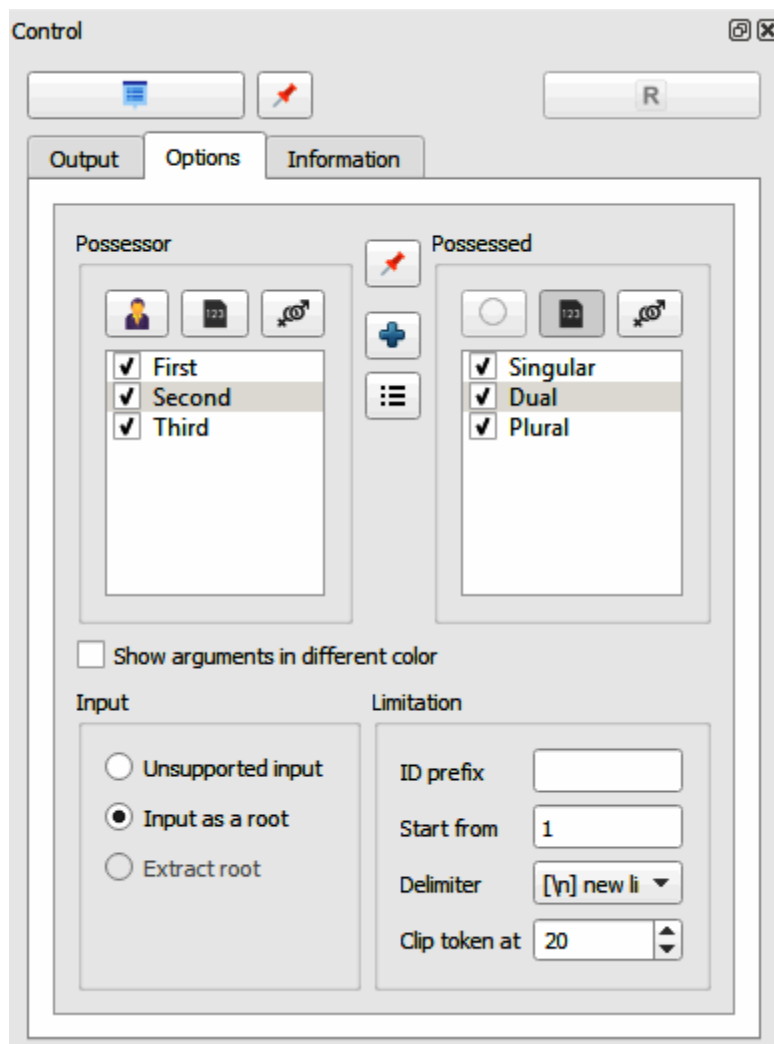
### Adjusting verb grammatical subclasses

- Set the grammatical subclasses by first selecting the major subclass, fine tune the details as needed.
- You may click on button (★) to select all items in the currently selected subclass.
- You may save your settings as default by clicking the button (📌) on top.



## Adjusting conjugation arguments

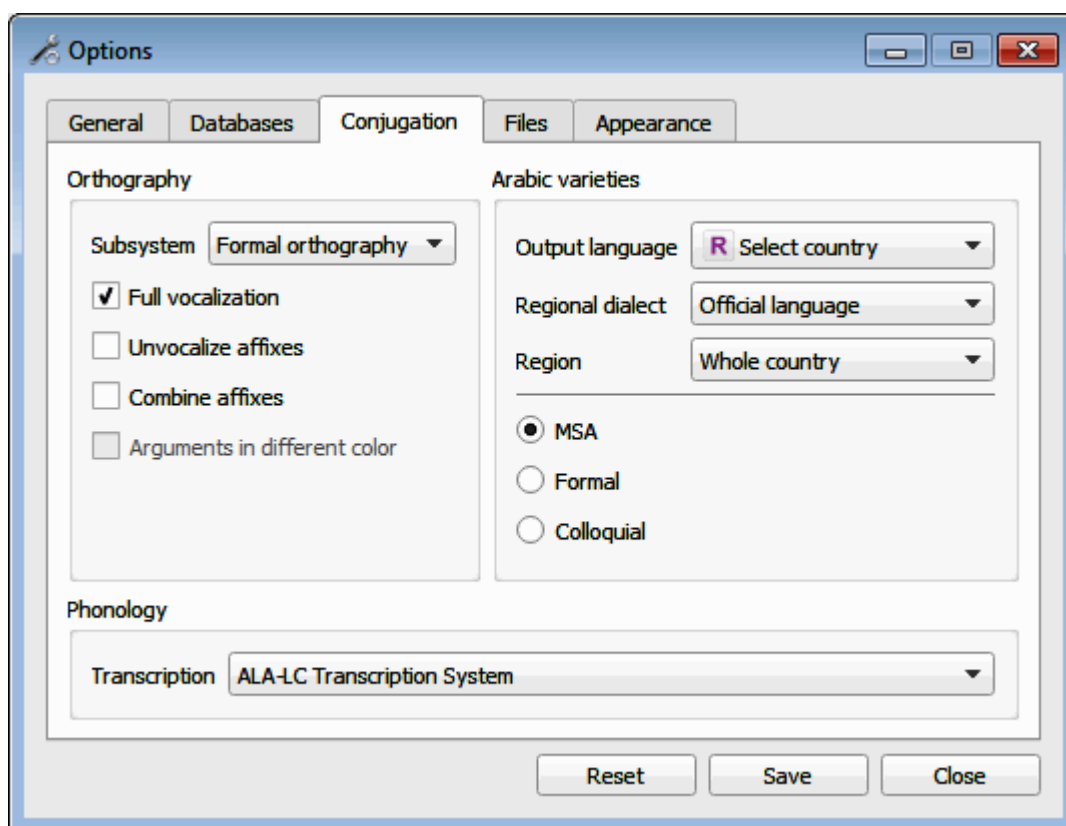
- Click the (Options) tab in the Control pane.
- Click on the argument e.g. Person, a list will show up, select the details.
- You may click on button (+) to select all the arguments.
- You may enter an ID prefix to be shown along with the serial IDs.
- You may save your settings as default by clicking the button (📌) in the center.



## System settings

### *Setting language transcription*

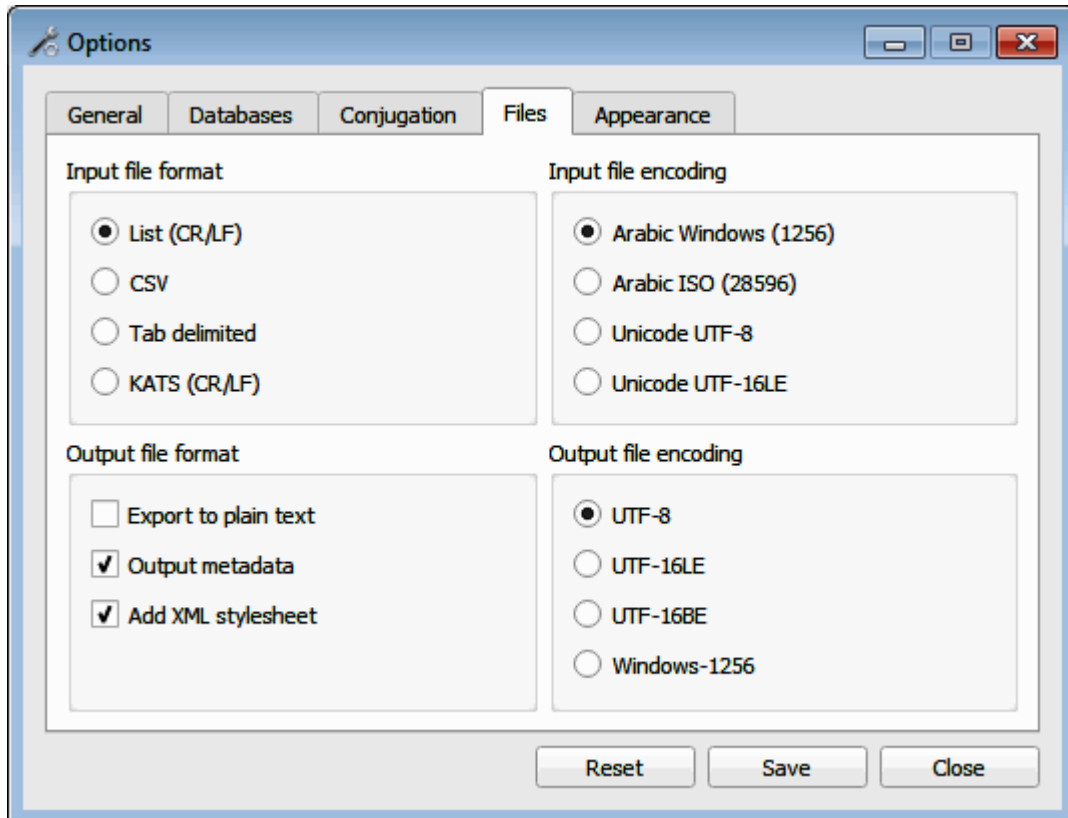
- Open the Options screen, click on the CONjugation tab.
- Select the transcription system.
- KATS is the default transliteration system.
- Click Save.







## Exporting the conjugation results

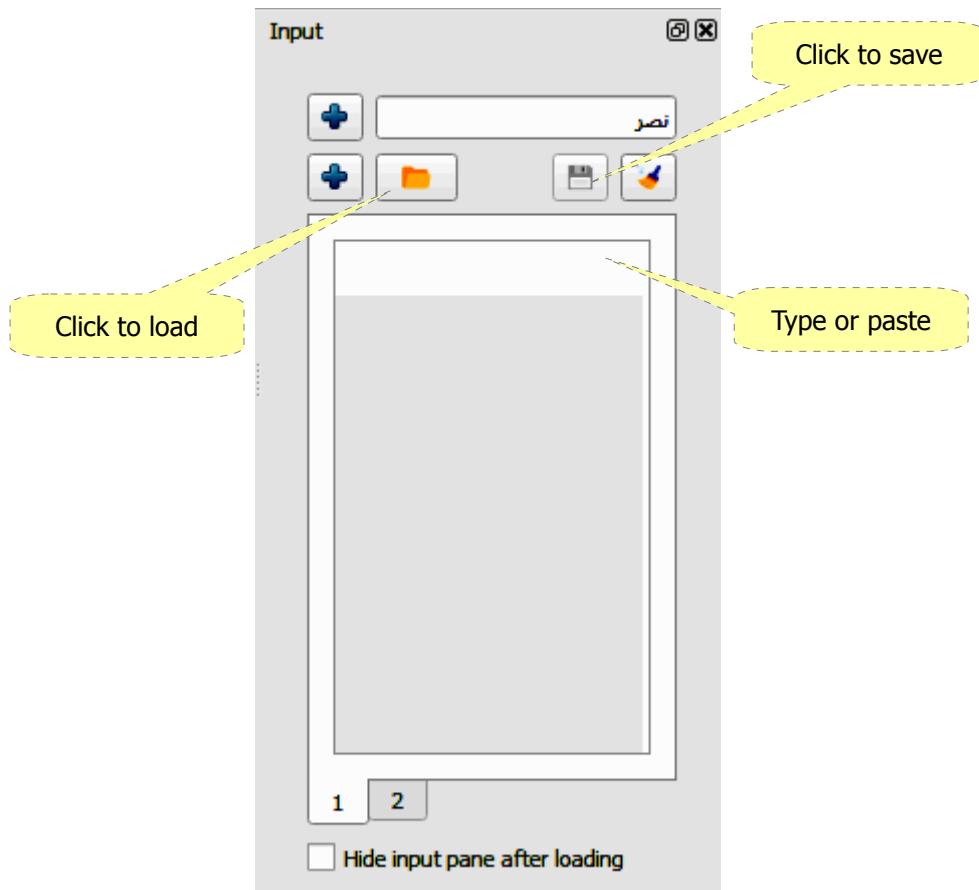
- Set both file format and encoding as needed.
- By default, exporting to XML will also generate a style sheet file for nicely laid-out contents on the browser, uncheck option (Add XML stylesheet) if you don't need it, the same applies to Metadata option.




## Working with files

### *Saving verb list to file*

- Paste a list of noun or roots to the space shown below.
- Click on button (  ) to load the list of nouns.
- Once loaded click the button (  ) to save the list to file.
- The file name will appear in the sample ribbon, under the “Files” tab.
- Double click the file name to load all saved nouns.



### *Loading files*

- Click on button (  ) to browse for the file.
- Double click the file name to open, the file name will be imported to the ribbon.
- Double click the file name to load the verbs saved.

## Visualization

- Animated interactive tree visualization is limited to 500 nodes to be responsive.
- Use the mouse to expand and pan the tree.

